

GRADALL®

534D10-45

MATERIAL HANDLER

SPECIFICATIONS



534D10-45

Performance

Rated Capacity

At 24" (610 mm) load center,
10,000 lbs. (4,536 kg)

Maximum Lift Height

45 ft. (13.7 m)

Frame Leveling

8 degrees

Lift Speed (boom retracted)

Empty 105 f.p.m. (32 m/min)
Loaded 95 f.p.m. (29 m/min)

Boom Speed

Extend 100 f.p.m. (30.5 m/min)
Retract 105 f.p.m. (32 m/min)

Travel Speeds Forward and Reverse

2WD 0-19 mph (30.6 km/hr)
4WD 0-6.5 mph (10.5 km/hr)

Drawbar Pull

Loaded 21,000 lbs. (9,524 kg)

Operating Weight

With 48" (1.2 m) carriage and forks,
25,300 lbs. (11,474 kg)

Drive Line Specifications

Engine

Make and Model . . . Cummins B3.9C-116
Turbo-charged, after-cooled

Fuel No. 2 Diesel
Cycles 4
No. of Cylinders 4
Displacement 239 cu. in. (3.9 L)
Rated Speed 2500 rpm
Max. Gross BHP 116 HP (86.5 kw)
Fuel Tank 38 gal. (141 L)

Engine Filters

Two-stage dry air cleaner – centrifugal
pre-cleaner with continuous dust ejector
PLUS cleanable and replaceable dry filter
element. Visual service indicator.

Replaceable spin-on fuel filter. Full-flow
replaceable spin-on engine oil filter.

Electrical System

Voltage – 12V
Alternator – 65 amp
Battery – 810 Cold Cranking AMP at 0°F

Hydrostatic Drive

6300 PSI (43,407 kPa) closed loop with
piston pump and motors.

All hydraulic connections ORS and Code
62 O-ring flanges.

Integral reservoir with implement
hydraulics.

8 micron suction filter for charge pump.

Self-contained, washplate design,
variable displacement, over center, piston
pump. Neutral start switch. (Park brake
must also be engaged to start.)

2WD and 4WD inching.

2WD – 4WD switch on dash.

Forward, neutral, reverse lever on left
of steering column.

Single foot pedal control provides both
braking and inching for lifting while
maneuvering vehicle.

Electro/hydraulic traction lock valve for
superior tractive effort.

Axles

Planetary hubs with piston motors on
rear axle.

Piston motor-driven planetary front axle
with high-bias differential.

Brakes

Service - Hydraulic wet disc brake on
each front wheel.

Hydraulic dynamic braking on front axle
and both rear wheels.

Parking

Wet disc spring-applied electro/hydraulic
release, fail-safe on both front wheels.

Light on dash indicates when brake is on.

Tires

14:00x24 - 12PR, G2 type.
Optional: 17.5x25 - 12PR, L2 type on front.

Cab

Certified ROPS / FOPS structure with horn,
back-up alarm and standard right side
rear view mirror.

Steering

Hydraulic power steering with manual
backup. Rear wheel steering, 90° pivot
around either front tire. Outside turning
radius is less than chassis length.

Instruments

Volt meter, hour meter, engine oil pressure,
temperature, fuel gauge. All gauges
protected by clear acrylic cover.

Controls

Grouped for operator comfort and
convenience.

Boom lift and crowd on single joystick.

Right-hand tilt and sway lever.

Foot throttle.

Floor mounted traction lock switch.

Hydraulic System-Implement

Single-section gear pump.

40 gal. (151.4 L) system capacity.

8 micron filter with visual service indicator
and suction strainer.

Lift, crowd, tilt and sway cylinders have safety
checks to prevent dropping of load in the
event of hose or other hydraulic failure.

Accessories & Options

Cab Enclosure

Lockable, split door, windshield wiper,
heater & defroster fan.

Light Group

Consists of 2 cab-mounted headlights, 1
backup/tail/stoptlight and rotating beacon.

Auxiliary Hydraulic Circuit

Required for all attachments equipped with
cylinders or other hydraulic components.
Consists of valves, controls, hydraulic lines.

Radial Tires

Winch

Left Hand Tilt / Sway Control

Tilt on Joystick

Rear Axle Stabilization

Attachments

Carriage

48" (1.2 m), 66" (1.7 m) & 72" (1.8 m)

Slope Pile Carriage

48" (1.2 m) and 66" (1.7 m)

100° Swing Carriage

72" (1.8 m) Carriage

180° Swing Carriage

72" (1.8 m)

100° Drywall Swing Carriage

72" (1.8 m)

Pallet Forks

2" x 6" x 48" (50.8 mm x 152.4 mm x 1.2 m)

Cubing Forks

2" x 2" x 48" (50.8 mm x 50.8 mm x 1.2 m)

Vertical Mast

6' (1.8 m) with 48" (1.2 m)
or 66" (1.7 m) Carriage

100° Swing Mast

6' (1.8 m) with 48" (1.2 m)
or 60" (1.5 m) Forks

Truss Boom With or Without Winch

10' (3.0 m)

Bucket

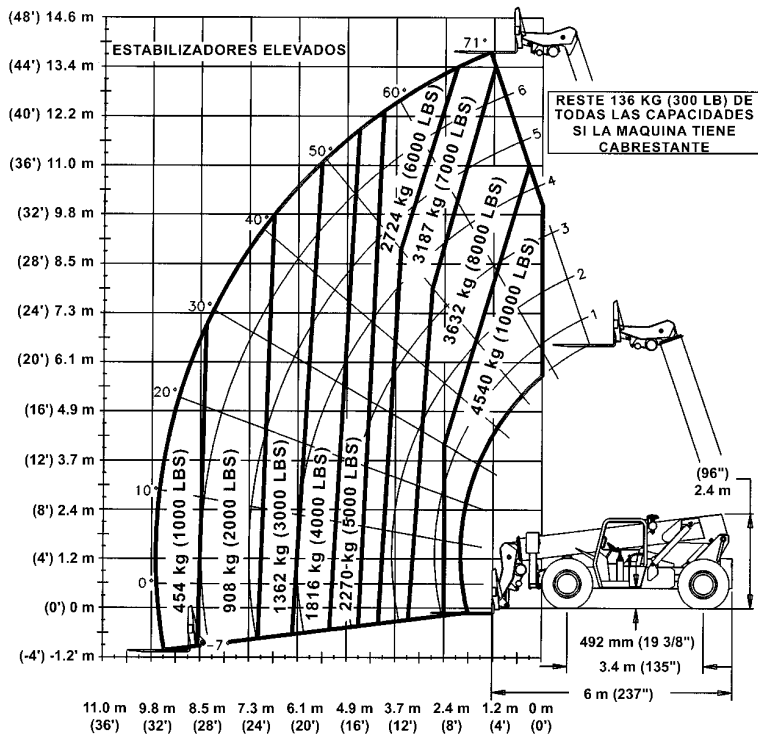
0.75 CY (0.57 m³) or 1.25 CY (0.95 m³)

Work Platform

Instant Hook

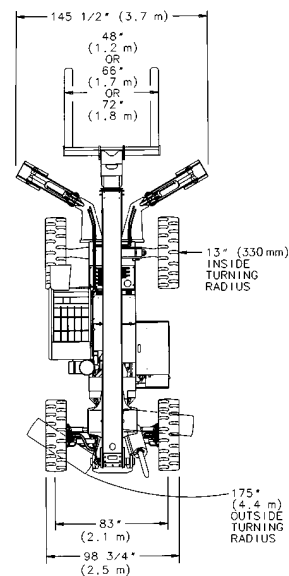
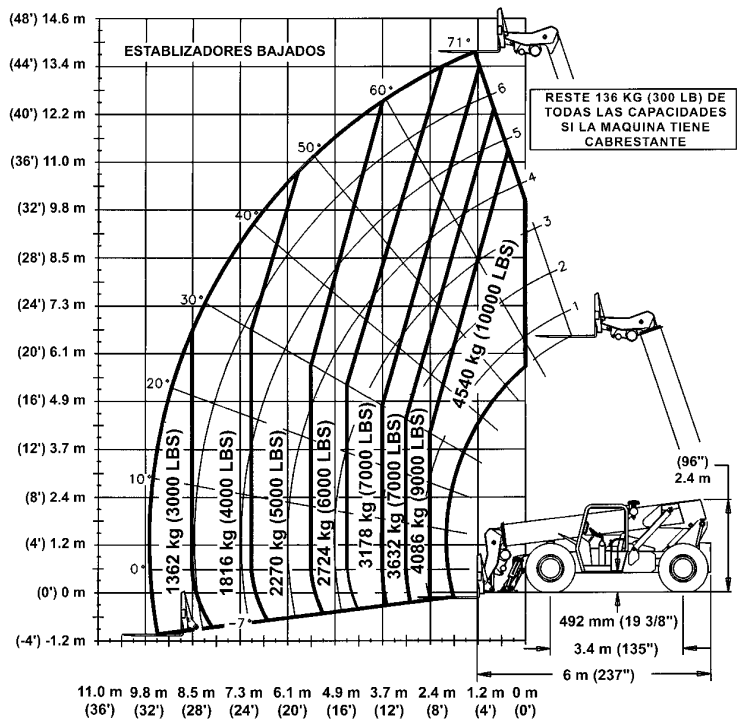
534D10-45

MATERIAL HANDLER



Max. Reach:
31.5 ft. (9.6 m)

Max. Lift:
45 ft. (13.7 m)



IMPORTANT

Rated lift capacities shown are with machine equipped with carriage and pallet forks and on a firm, level surface with undamaged, properly inflated tires. Machine specifications and stability are based on rated lift capacities at specific boom angles and boom lengths. If specifications are critical, the proposed application should be discussed with your dealer.

DO NOT exceed rated lift capacity loads, as unstable and dangerous machine conditions will result.

DO NOT tip the machine forward to determine the allowable load.

Use only Gradall approved attachments with the proper material handler model/attachment load capacity chart displayed in the operator's cab. OSHA requires all rough terrain forklift operators to be trained according to OSHA 29 CFR 1910.178 (l).

This machine is designed to meet specifications of ASME B56.6b-1998. It is Gradall Policy to continually improve its products. Therefore, designs, materials and specifications are subject to change without notice and without incurring any liability on units already sold. Units shown may have optional equipment. See applicable specifications and price lists for optional equipment.

GRADALL®
A JLG COMPANY

The Gradall Company
600 East Chestnut Street, Orrville, Ohio 44667
Phone (330) 339-2211 FAX (330) 684-1029
www.gradall.com