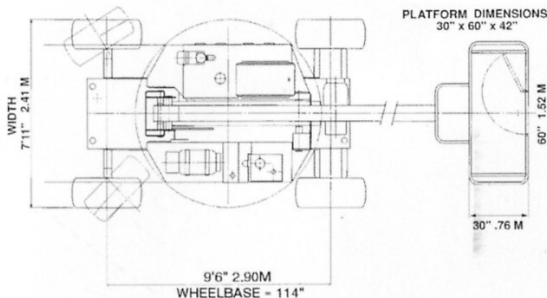
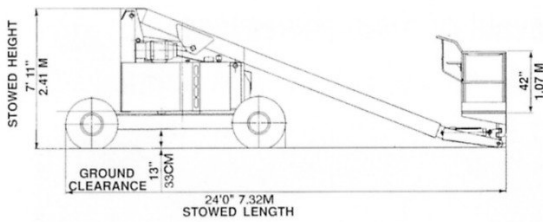
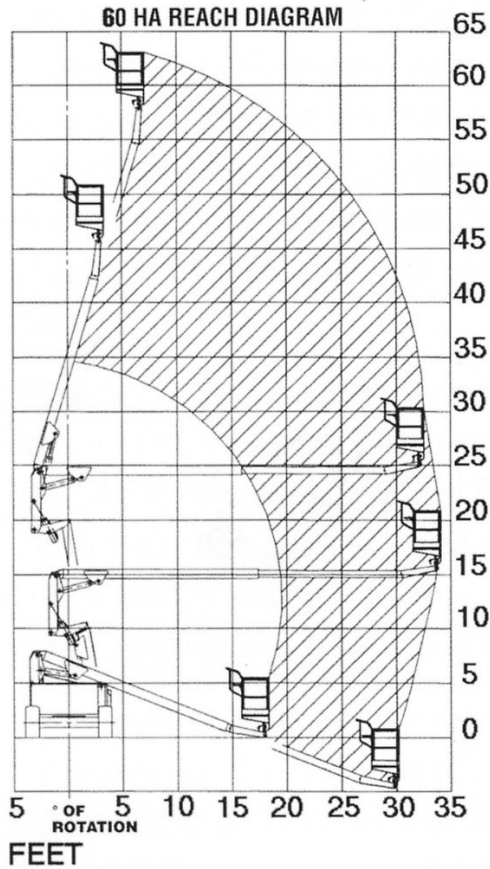


# MACHINE SPECIFICATIONS



**2-WHEEL DRIVE  
VERSION SHOWN**

|   | <b>60HA</b>                | <b>2WD</b>                                     | <b>4WD</b>                                     |
|---|----------------------------|--|--|
| <b>PLATFORM HEIGHT</b>                          |                            | 60 ft., 0 in. (18.3m)                          | 60 ft., 0 in. (18.3m)                          |
| <b>WORKING HEIGHT</b>                           |                            | 66 ft., 0 in. (20.1m)                          | 66 ft., 0 in. (20.1m)                          |
| <b>PLATFORM-STD.</b>                            |                            | 30" x 60" x 42" (.76m x 1.52m x 1.07m)         |  |
| <b>PLATFORM CAPACITY UNRESTRICTED</b>           |                            | 500 lbs. (227kg)                               | 500 lbs. (227kg)                               |
| <b>UP AND OVER PLATFORM HEIGHT</b>              |                            | 24 ft., 0 in. (7.32m)                          | 24 ft., 0 in. (7.32m)                          |
| <b>HORIZONTAL REACH AT UP &amp; OVER HEIGHT</b> |                            | 33 ft., 0 in. (10.06m)                         | 33 ft., 0 in. (10.06m)                         |
| <b>STOWED LENGTH</b>                            |                            | 24 ft., 2 in. (7.40m)                          | 24 ft., 2 in. (7.40m)                          |
| <b>STOWED HEIGHT</b>                            |                            | 7 ft., 11 in. (2.41m)                          | 7 ft., 11 in. (2.41m)                          |
| <b>WIDTH</b>                                    |                            | 7 ft., 11 in. (2.41m)                          | 7 ft., 11 in. (2.41m)                          |
| <b>TAILSWING/ ARMSWING</b>                      |                            | ZERO   | ZERO   |
| <b>GROSS WEIGHT (approx)</b>                    |                            | 20,100 lbs. (9125 kg)                          | 20,600 lbs. (9353 kg)                          |
| <b>ENGINE</b>                                   | GAS<br>DIESEL              | 63 HP @ 3000 rpm<br>42 HP @ 3000 rpm           | 63 HP @ 3000 rpm<br>42 HP @ 3000 rpm           |
| <b>MAIN PUMP OUTPUT</b>                         |                            | 41 gpm @ 3000 rpm                              | 41 gpm @ 3000 rpm                              |
| <b>HYDRAULIC TANK CAPACITY</b>                  |                            | 50 U.S. gals. (189.3 L)                        | 50 U.S. gals. (189.3 L)                        |
| <b>FUEL TANK CAPACITY</b>                       |                            | 25 U.S. gals. (94.6 L)                         | 25 U.S. gals. (94.6 L)                         |
| <b>TRAVEL SPEED</b>                             |                            | 4.0 mph (6.40 km/hr)                           | 3.0 mph (4.80 km/hr)                           |
| <b>GRADEABILITY</b>                             |                            | 25% (14°)                                      | 35% (19°)                                      |
| <b>TURNING RADIUS (outside)</b>                 | 2 Wh. Steer<br>4 Wh. Steer | 18 ft., 3 in. (5.56m)<br>11 ft., 7 in. (3.53m) | 17 ft., 3 in. (5.26m)<br>11 ft., 7 in. (3.53m) |
| <b>TIRES</b>                                    |                            | 14.00 x 17.5                                   | 15.00 x 19.5                                   |
| <b>WHEELBASE</b>                                |                            | 114" (2.90m)                                   | 114" (2.90m)                                   |
| <b>GROUND CLEARANCE</b>                         |                            | 13 in. (33cm)                                  | 14 in. (36cm)                                  |