

# Model G12-55A TELEHANDLER



## Performance

### Rated Capacity

At 24 in. (610 mm) load center,  
12,000 lb (5,443 kg)

### Maximum Lift Height

55 ft (16.8 m)

### Frame Leveling

10 degrees

### Lift Speed (boom retracted)

Up: 15.8 sec  
Down: 18.3 sec

### Boom Speed

Extend: 17.3 sec  
Retract: 16.8 sec

### Travel Speed Forward

20 mph (32 kmph)

### Drawbar Pull (loaded)

20,000 lb (9,072 kg)

### Operating Weight

With 48 in. (1.2 m) carriage and forks,  
35,100 lb (15,921 kg)

## Standard Specifications

### Engine

Make and Model John Deere 4045T  
Turbocharged and Aftercooled

Fuel No. 2 Diesel

Cycles 4

No. of Cylinders 4

Displacement 276 cu in (4.5 L)

Rated Speed 2,400 rpm

Max. Gross BHP 140 hp (104 kW)

Fuel Tank 38 gal (144 L)

### Engine Filters

Two-stage dry air cleaner – centrifugal  
pre-cleaner with continuous dust ejector  
and replaceable dry filter element.

Visual service indicator.

Replaceable element-type fuel filter.

Full-flow replaceable-element engine oil filter.

### Electrical System

Voltage – 12V

Alternator – 65 amp

Battery – 1050 Cold Cranking amps at 0°F

### Transmission

ZF WG98 powershift with torque converter  
4 speeds forward, 3 reverse.

Neutral start switch (Park brake must  
be engaged to start).

Full time 4-wheel drive.

Directional and gear change control on single  
steering mounted lever.

### Axles

Trunnion mounted planetary 55° steer axles.

Integral steer cylinder.

High bias limited slip differential on front axle.

### Service Brakes

Inboard wet disc brake on front and rear axles.

### Parking Brakes

Wet disc spring-applied hydraulic release  
on front axle.

Light on dashboard indicates when  
brake is on.

### Tires

17:50 x 25 – 12PR, G2 type.

### Cab

Certified ROPS/FOPS structure, horn  
and adjustable seat and horn.

Forward, neutral, reverse lever on left  
of steering column.

### Steering

Hydraulic power steering with manual backup.

Operator selectable 4-wheel circle, 4-wheel  
crab, 2-wheel front.

### Instruments

Volt meter, hourmeter, engine oil pressure,  
temperature, fuel gauge.

All gauges protected by clear acrylic cover.

### Controls

Grouped for operator comfort  
and convenience.

Key operated ignition/starter switch.

Boom lift, crowd and fork tilt on single joystick.

Right-hand sway and outrigger levers.

Foot throttle.

### Hydraulic System-Implement

Load sense piston pump.

60 gal (227.1 L) system capacity.

10 micron filter with visual service indicator  
and suction strainer.

Lift, crowd, tilt, sway and outrigger cylinders  
have holding valves intended to prevent  
dropping of load in the event of hose or other  
hydraulic failure.

### Auxiliary Hydraulics

Used for all attachments equipped with  
cylinders or other hydraulic components.

Consists of valves, controls, and  
hydraulic lines.

## Accessories & Options

### Cab Enclosure

Lockable, split door. Washer and windshield  
wiper. Heater and defroster fan.

### Light Group

2 cab-mounted headlights,  
1 backup/tail/stoptlight and rotating beacon.

### Cold Weather Start Package

Ether start and block heater.

### Rock Tires

### Foam Filled Tires

### Air Conditioning

### Auxiliary Electrics

### Pintle Type Tow Hook

## Attachments

### Standard Carriages

50 in. (1.3 m), 60 in. (1.5 m) or  
72 in. (1.8 m)

### Side Tilt Carriage\*

48 in. (1.2 m) or 72 in. (1.8 m)

### 100° Swing Carriage\*

72 in. (1.8 m)

### 180° Swing Carriage\*

72 in. (1.8 m)

### Pallet Forks

2 x 4 x 48 in. (51 mm x 102 mm x 1.2 m) or  
2.25 x 5 x 48 in. (57 mm x 127 mm x 1.2 m)

### Cubing Forks

2 x 2 x 48 in.  
(51 mm x 51 mm x 1.2 m)

### Vertical Mast\*

6 ft (1.8 m) Quick-Switch

### 100° Swing Mast\*

6 ft (1.8 m)

### Buckets

0.75 cu yd (0.57 m<sup>3</sup>) – 60 in. (1.5 m)

1.25 cu yd (0.95 m<sup>3</sup>) – 74 in. (1.9 m)

1.25 cu yd (0.95 m<sup>3</sup>) – 102 in. (2.59 m)

### Truss Boom With\* or Without Winch

10 ft (3.0 m) or 15 ft (4.5 m)

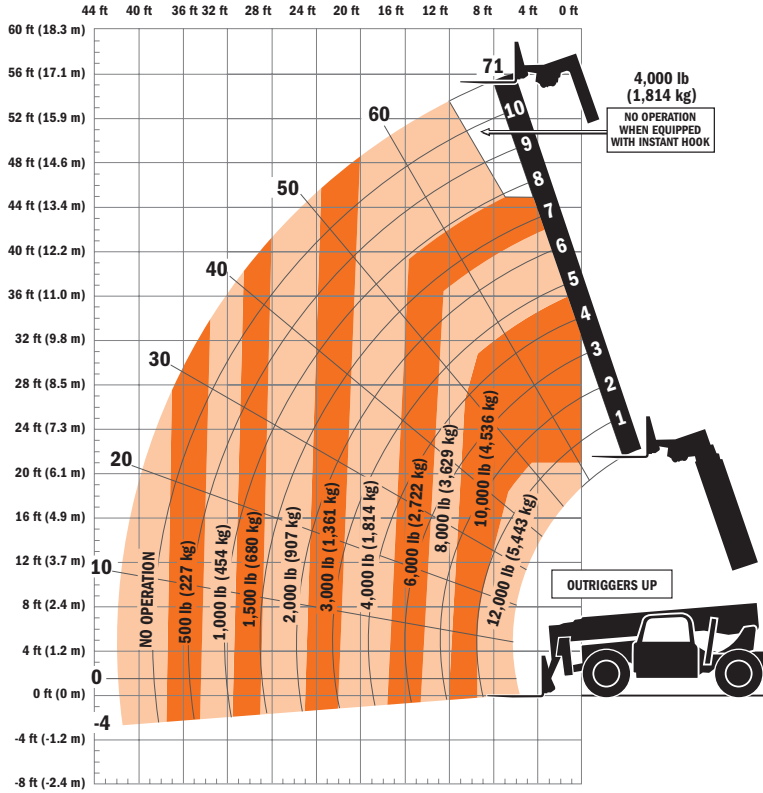
### Personnel Work Platform

### Instant Hook\*

\*Requires auxiliary hydraulics

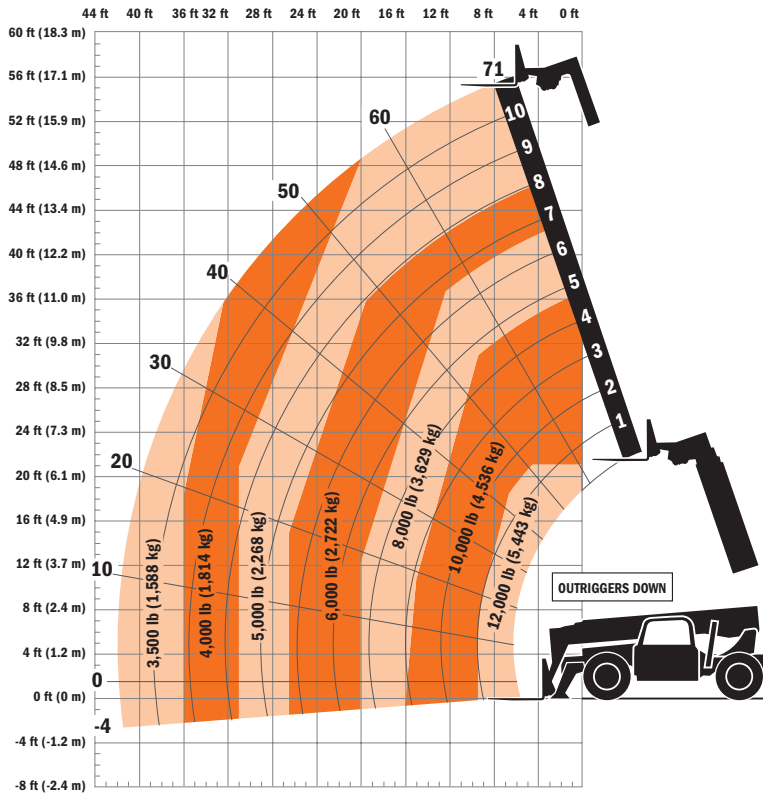


# Model G12-55A TELEHANDLER



## Dimensions

- Length (less forks) . . . . . 240 in. (6.09 m)
- Width. . . . . 102 in. (2.59 m)
- Height . . . . . 101 in. (2.56 m)
- Wheelbase. . . . . 144 in. (3.65 m)
- Ground Clearance . . . . . 19 in. (482 mm)
- Outside Turning Radius. . 168 in. (4.27 m)
- Max. Reach from Front Tires to  
24 in. (610 mm) Load Center . . . . . 42 ft  
(12.8 m)



## IMPORTANT

Rated lift capacities shown are with machine equipped with carriage and pallet forks. The machine must be level on a firm surface with undamaged, properly inflated tires. Machine specifications and stability are based on rated lift capacities at specific boom angles and boom lengths. (If specifications are critical, the proposed application should be discussed with your dealer.)

DO NOT exceed rated lift capacity loads, as unstable and dangerous machine conditions will result.

DO NOT tip the machine forward to determine the allowable load.

Use only JLG approved attachments with proper material handler model/attachment load capacity charts displayed in the operator's cab. OSHA requires all rough terrain forklift operators be trained according to OSHA 29 CFR 1910.178 (L).



**JLG Industries, Inc.**  
 1 JLG Drive  
 McCConnellsburg, PA 17233-9533  
 Telephone 717-485-5161  
 Toll-free in US 877-JLG-LIFT  
 Fax 717-485-6417  
 www.jlg.com

*Due to continuous product improvements, JLG Industries reserves the right to make specification and/or equipment changes without prior notification. This machine meets or exceeds ASME B56.6-2002 as originally manufactured for intended applications.*

Form No.: SS-G642A-0204-10M  
 Part No.: 3132211  
 Printed in USA  
 R090602